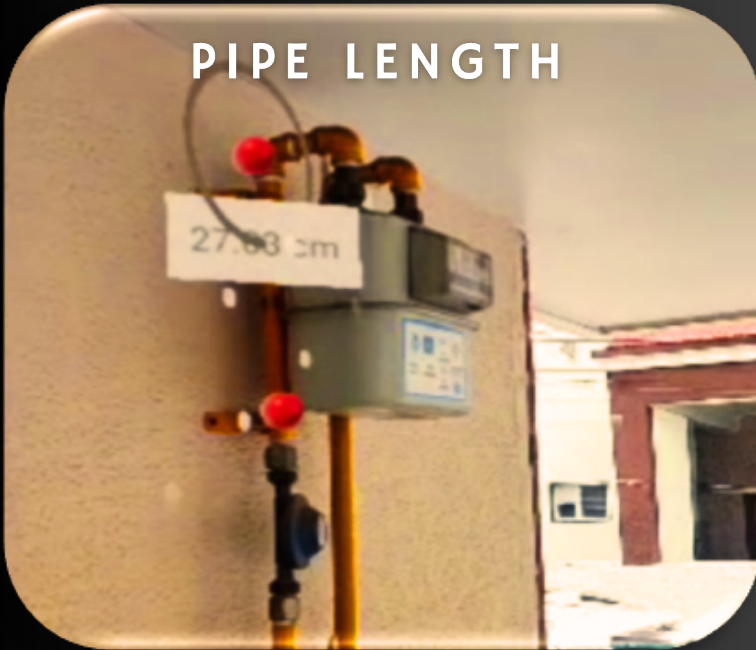


PROJECT MATERIAL & BOM RECONCILIATION

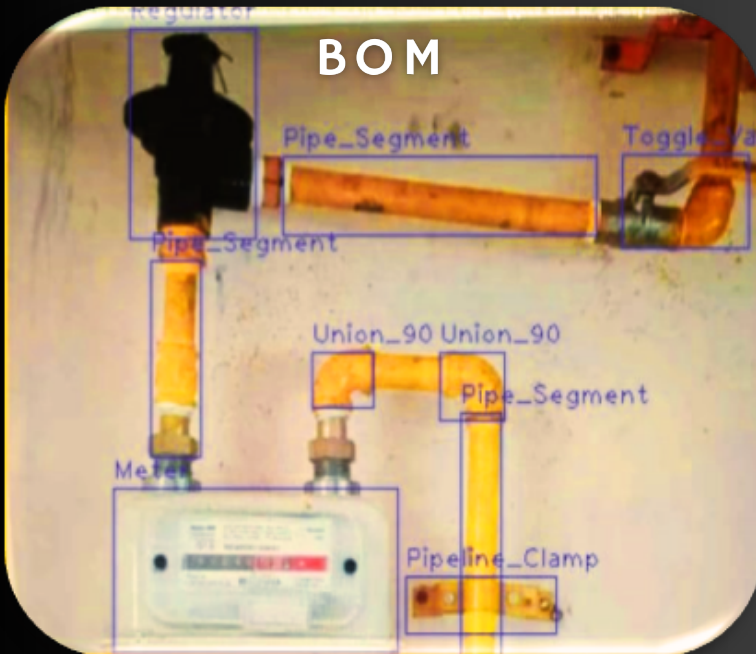
PIPE LENGTH



*Instant Verification of
Bill of Quantity*

*Instant measurement
of Pipe length*

BOM



*Ease of Inspection/
Auditing*

*Reconciliation &
Accounting Benefits*

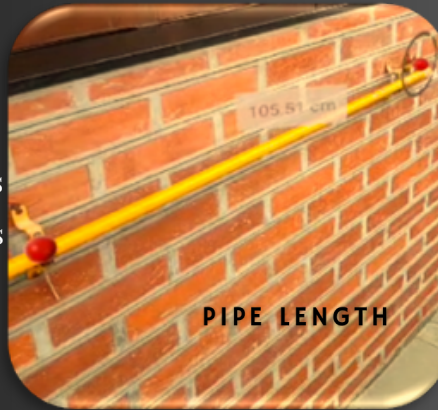
DATA DRIVEN TRANSFORMATION

Powered by AI



UTILITY CHALLENGES

- Identify the best structure of layout from the nearest tapping point to the household
- Prepare Isometric view for each consumer
- Material Reconciliation and accounting Gaps
- Manual driven measurement prone to errors
- Complaint from customers on overcharging
- Compliance adherence and records with digital storage



MODEL OUTPUT FOR VERIFICATION OF BOM

AI ENGINE OUTPUT :
Sequence Number : demo
Date & Time : 10-03-2023 13:01:18
Lat-Long : 19.2261656,72.8670472

Meter : 2
Rubber_pipe : 1
Pipeline_Clamp : 5
Toggle_Valve : 2
Pipe_Segment : 4
Union_90 : 3

AI ENGINE OUTPUT :
Sequence Number : demo1234
Date & Time : 10-03-2023 13:10:54
Lat-Long : 19.2261656,72.8670472

Regulator : 1
Pipeline_Clamp : 1
Toggle_Valve : 1
Meter : 1
Union_90 : 2
Pipe_Segment : 3

Sequence Number : demo
Date & Time : 10-03-2023 13:31:26
Lat-Long : 19.2261656,72.8670472

BOM :

Union_90 : 3
Pipe_Segment : 3
joint : 2
Toggle_Valve : 1
Regulator : 1
Meter : 1
Pipeline_Clamp : 4

AI ENGINE OUTPUT :
Sequence Number : demoQw
Date & Time : 10-03-2023 13:08:23
Lat-Long : 19.2261656,72.8670472

Pipeline_Clamp : 1
Meter : 1
Union_90 : 2
Toggle_Valve : 1
Pipe_Segment : 3
Regulator : 1

INNOVATIVE APPROACH

- AI & ML based image modeling
- Integration through open API's for utilities, ERP, CRM & 3rd party applications
- Deployment in cloud / on premise setup
- Configurable business rules for quick adaption and usability

BENEFITS

- Instant processing of BOM by AI Engine
- Expedite the piping verification process
- Prepares the isometric view of piping
- Instantly produce a bill of materials (BOM) used
- Analyzes the house structure and layout for it
- Adhere to the compliance process outlined in PNG RB

Our Journey so far

